

Quick Guide

- **Installation / Update**

- **JVP Software** **4.5.0.9**
- **JVP VIS - Server** **4.5.0.8**
- **JVP Smart Assistant** **4.5.0.0**

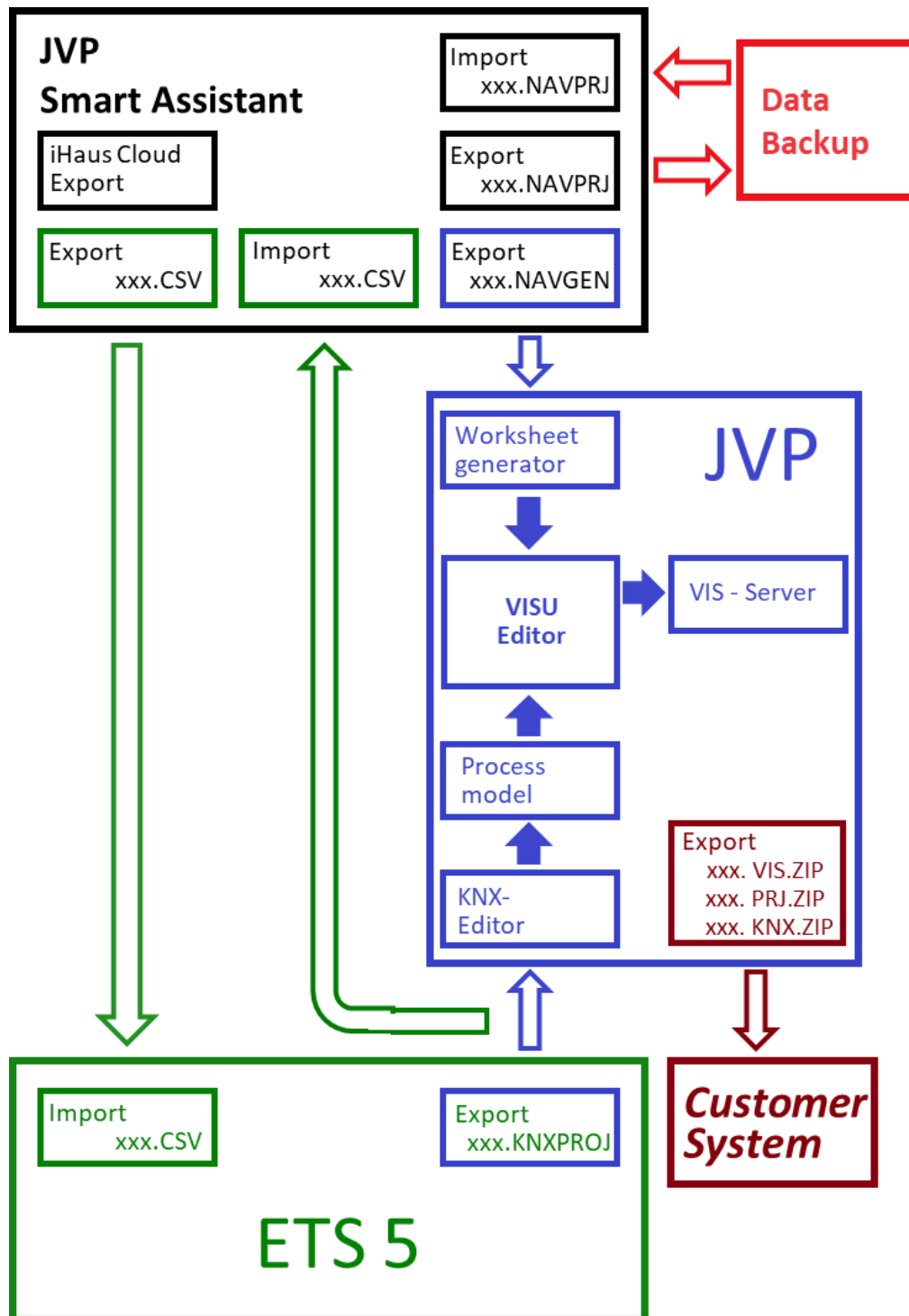


Albrecht Jung GmbH & Co.KG
Volmestrasse 1
58579 Schalksmühle, Germany
www.jung.de/en

Table of Contents:

1	Overview	3
2	Description	4
	Operating systems supported:	4
	Operating systems not supported:	4
2.1	UPDATE of older Versions:.....	5
2.2	Requirements for the Configuration Computer:	6
2.2.1	Increasing maximum Content Length of the Requirement Limit in the IIS	6
3	Installation	8
3.1	JVP (Planner)	8
3.1.1	Documentation.....	8
3.2	JVP Visualization Server (VIS Server)	9
3.2.1	Documentation.....	9
3.3	JVP – Smart Assistant	10
3.3.1	Documentation.....	10
3.4	Activation of the IIS.....	11
3.5	Installation on external Hardware.....	12
3.6	Changing the Port Address of JVP Smart Assistant and VIS Server	14
4	Brief Descriptions of the Software	15
4.1	JVP (Planner)	15
4.1.1	Sheet Generator	15
4.2	JVP – Smart Assistant	16
4.2.1	Access option 1 Local, on the Configuration PC	16
4.2.2	Access option 2 Via the local network	16
4.2.3	Export/Import of projects.....	16
4.2.4	Note on Group Address Structure	17
4.3	Visualization Server	18
4.3.1	Note on User Management.....	19
4.3.2	Note on User Administration in the Vis Server	20

1 Overview



Note

JVP-Smart Assistant, JVP and ETS 4 or ETS 5, can, but do not have to be installed on the same PC.

2 Description

The JUNG Visu Pro (**JVP**) is a universal visualisation and control system for KNX building technology.

The JUNG Visu Pro visualisation server (**VIS server**) provides visualisation pages via the Windows Internet Information Service (IIS). Thus, it is possible to operate the visualization even via browsers (HTML5), e.g. for mobile applications. The VIS server is installed on the JVP visualization system as an additional setup.

The JUNG Visu Pro Smart Assistant (**Smart Assistant**) is a planning aid for JUNG Visu Pro visualizations. A basic visualization is created with the Smart Assistant, in which the light, blind and heating can be navigated to spatially using the corresponding controls of the JUNG-GUI (templates for apartments and family homes). The basic visualization created with the Smart Assistant can be customized and refined optionally with the normal editing tools of the JVP (*visualization, process model*) as needed.

When editing a project in the Smart Assistant, a group address structure adjusted to the project can also be generated. This can support the configuration in the KNX configuration tool ETS and thereby further facilitate the continuous editing of a visualization project. Alternatively, an existing group address structure or KNX project can be imported.

Note

Knowledge of the programs JVP, VIS-Server and Smart Assistant is required.

Operating systems supported:

- WINDOWS 10, 32 + 64-bit

Operating systems not supported:

- WINDOWS SERVER 2008 / 2012
- WINDOWS XP

Software requirements:

- NET Framework 3.5 Service Pack 1
(the .NET Framework must be activated via the Windows Features from Windows 8 and higher)
- Microsoft Internet Explorer
- DirectX Version 9.0c

KNX bus connection

- **Falcon drive V2.2 or Falcon 5**

Installation sequence:

- JVP Software
- JVP Vis Server

2.1 UPDATE of older Versions:

The current UPDATE files can be found under www.jung.de –> Catalogue –> Online Catalogue –> JUNG Visu Pro or Smart Assistant.

Note

To guarantee the interaction of JVP, VIS and smart assistant, all modules must be up-to-date.

Older projects can be imported and edited with the new versions. Afterwards, these will NO longer be readable for "old" program versions.

As a result of new features in the programs

JVP	Version 4.0
VIS-Server	Version 4.0
Smart Assistant	Version 4.0,

some of the procedures change compared to the previous versions when creating JVP projects.

Note

The following images with Windows views are based on Windows 10.

2.2 Requirements for the Configuration Computer:

Operating system:

- Windows 10
- HTML-5 Browser (e.g. Chrome or Firefox in newest version)

Note

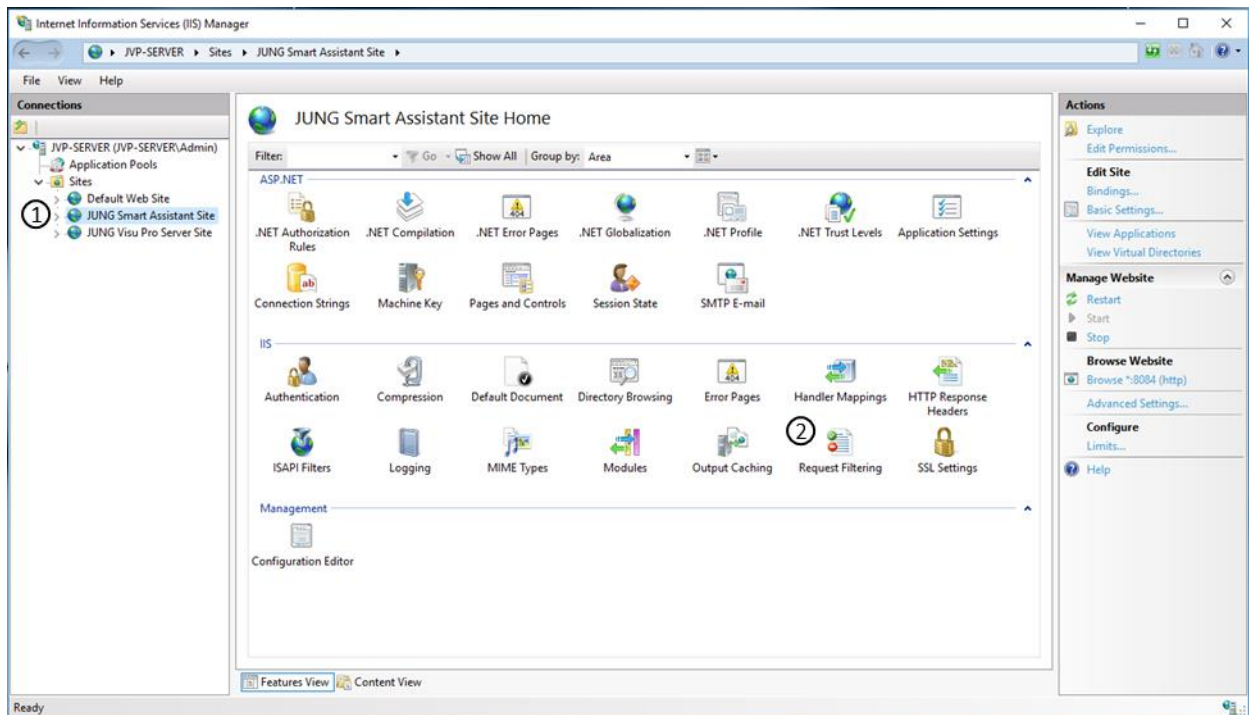
The setup of the navigator and VIS server recognize whether the IIS is activated on the system. It is recommended to increase the maximum content length of the requirement limit in the IIS to 50-60 MB. This setting is mandatory if ETS programs of more than 30 MB are to be loaded.

2.2.1 Increasing maximum Content Length of the Requirement Limit in the IIS

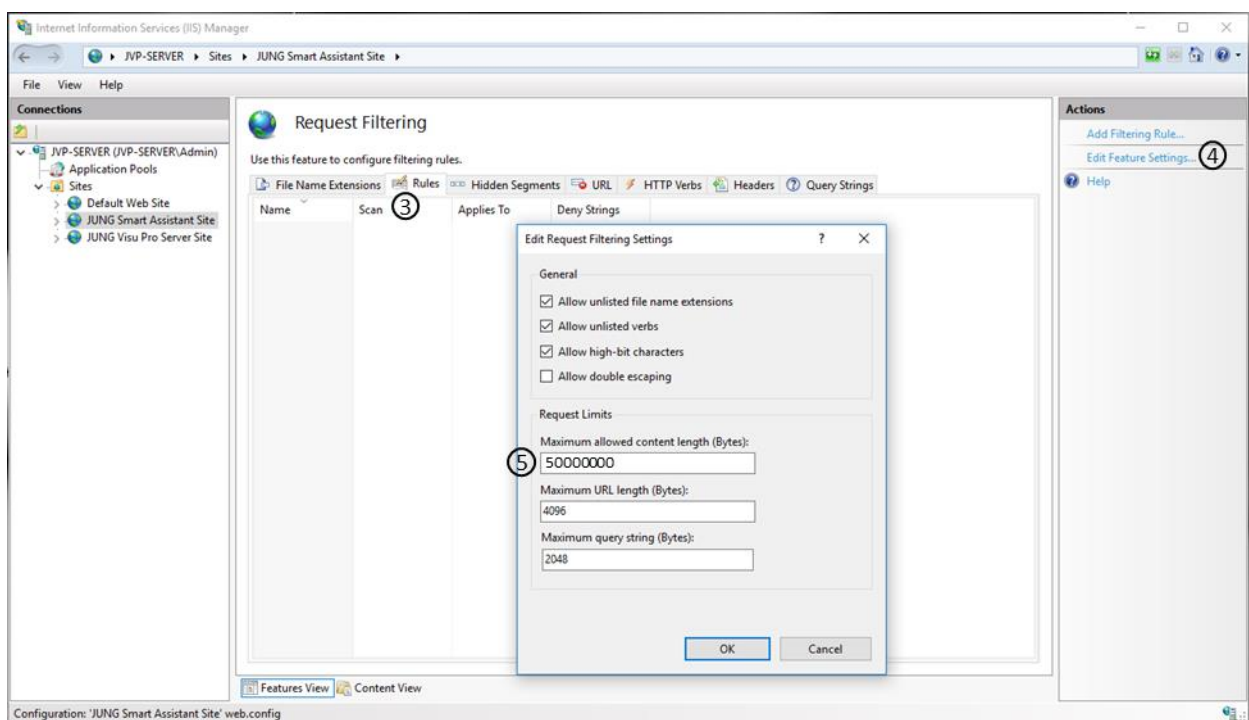
→ Windows search field "iis" enter → Internet Information Services (IIS) – Manager



→ Site → JUNG Smart Assistant Site → Request Filtering



→ Request Filtering → Rules → Edit Request Filtering Settings



3 Installation

The JVP (planner) and JVP Smart Assistant can, but do not have to be installed on the same (configuration computer).

The VIS server should be installed on the JVP configuration computer in order to test customer projects, in which browser access is provided.

3.1 JVP (Planner)

Download of the JVP (–Planer) software at:

www.jung.de > Service > Get your Software licence (registration required)

Execute installation according to setup.

After installation, the JVP runs in demo mode.

The software can be used for 20 days without activation.

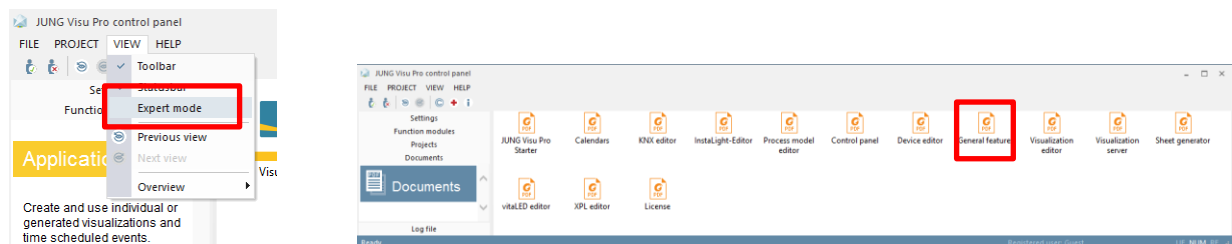
The JVP must be activated at a charge in order to obtain full functionality.

3.1.1 Documentation

The documentation of the individual components in the JVP can be viewed under the following directory:

Control Panel → Documents

Under View you can change to Expert mode



Note

You should first read the "General feature" PDF for information.
The further procedure is described in the documentation.

3.2 JVP Visualization Server (VIS Server)

Download of the visualization server software x.x at

www.jung.de -> Catalogue -> Online Catalogue-> JUNG Visu Pro -> ViS - Server

Note

*It is imperative that the JUNG Visu Pro software has been/is installed **before** installation of the VIS server.*

Execute installation according to setup.

During installation of the visualization server, the port address to be set for the IIS is queried. The **port 8083** is set by default.

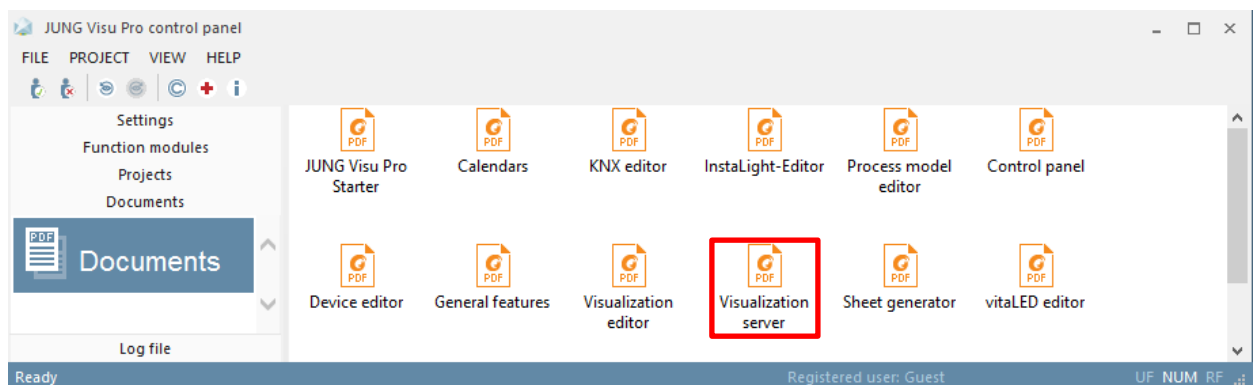
The Vis server is a server-client application.

It is invoked by entering the IP address and port in the input line of your browser, e.g.: [192.168.178.111:8083].

When invoking on your own system, [localhost:8080] is entered.

3.2.1 Documentation

After installing the VIS - server, the documentation is archived in JVP -> Control Panel -> Documents.



Note

The further procedure is described in the documentation

3.3 JVP – Smart Assistant

Download of the JVP – Smart Assistant at

www.jung.de > Service > Get your Software licence (registration required)

Execute installation according to setup.

During installation of the visualization server, the port address to be set for the IIS is queried. The **port 8084** is set by default.

The Smart Assistant is a server-client application.

It is invoked by entering the IP address and port in the input line of your browser, e.g. [192.168.178.111:8084].

When invoking on your own system, [localhost:8084] is entered.

Note

When starting the JVP Smart Assistant, the error message "IIS not found" appears. Please refer to the section "Activating IIS".

3.3.1 Documentation

The documentation can be found in the JVP Smart Assistant under Options -> Help.

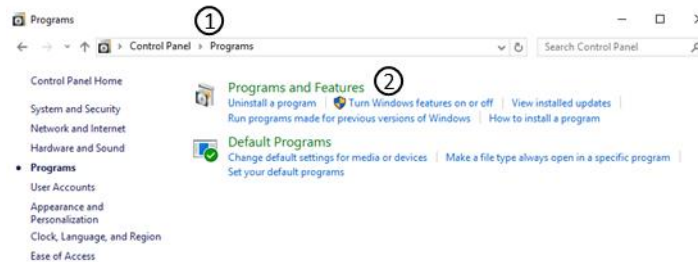
Note

The further procedure is described in the documentation.

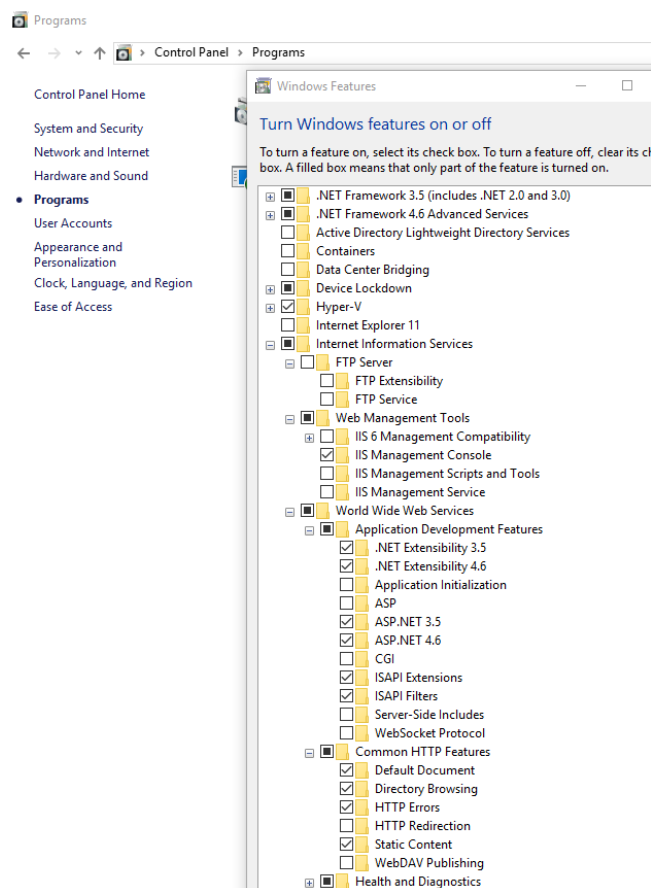
3.4 Activation of the IIS

The activated Windows Internet Information Service (IIS) is necessary for the JVP Smart Assistant and VIS Server. The IIS is normally activated on the Windows operating system. If this is not the case, please proceed as follows:

*Control Panel → Programs → Programs and Features
→ Turn Windows features on or off*



*The check boxes in the following figure must be set.
Afterwards, reboot the system*



Note

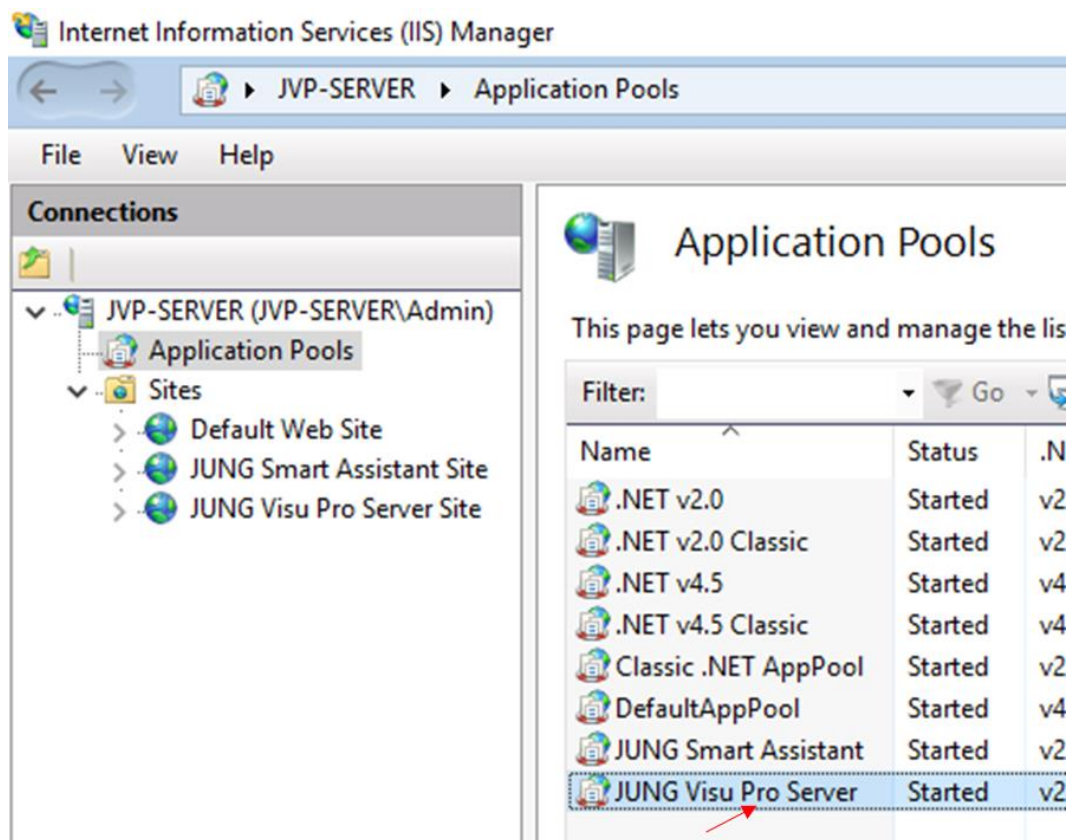
The functionality of the IIS can also be checked in the IIS Manager (see section 3.5)

3.5 Installation on external Hardware

During installation of the full version on external hardware, please consider the following settings in the IIS:

If the JVP full version is installed on external hardware, two time values must be changed in the IIS Manager. These values should generally be set as a precaution after a JVP installation.

Invoking the IIS Manager e.g. by entering "inetmgr" of the run line (administrative rights required):



Right mouse button on JUNG Visu Pro server

Advanced Settings

▼ CPU	
Limit (percent)	0
Limit Action	NoAction
Limit Interval (minutes)	5
Processor Affinity Enabled	False
Processor Affinity Mask	4294967295
Processor Affinity Mask (64-bit option)	4294967295
▼ Process Model	
> Generate Process Model Event Log Entry	
Identity	ApplicationPoolIdentity
Idle Time-out (minutes)	20
Idle Time-out Action	Terminate
Load User Profile	False
Maximum Worker Processes	1
Ping Enabled	True
Ping Maximum Response Time (seconds)	90
Ping Period (seconds)	30
Shutdown Time Limit (seconds)	90
Startup Time Limit (seconds)	90
▼ Process Orphaning	
Enabled	False
Executable	
Executable Parameters	
▼ Rapid-Fail Protection	
"Service Unavailable" Response Type	HttpLevel
Enabled	True
Failure Interval (minutes)	5
Maximum Failures	5
Shutdown Executable	
Shutdown Executable Parameters	
▼ Recycling	
Disable Overlapped Recycle	False
Disable Recycling for Configuration Changes	False
> Generate Recycle Event Log Entry	
Private Memory Limit (KB)	0
Regular Time Interval (minutes)	1740
Request Limit	0
> Specific Times	TimeSpan[] Array
Virtual Memory Limit (KB)	0

Set to value 0

3.6 Changing the Port Address of JVP Smart Assistant and VIS Server

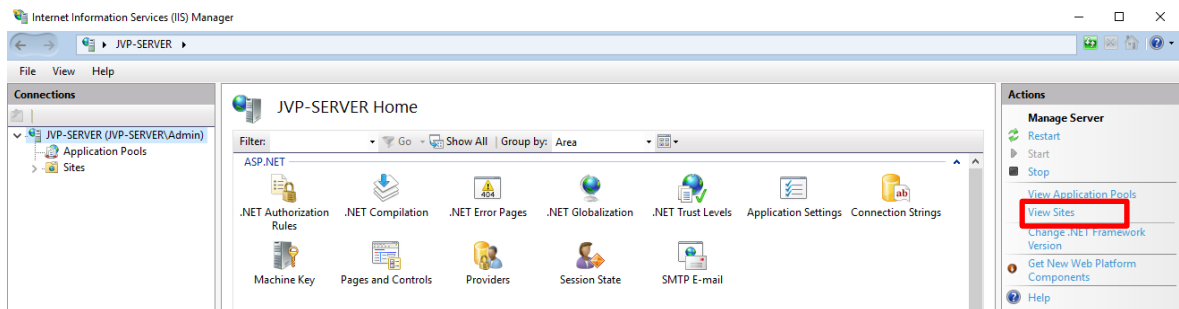
A subsequent change of the port address of the VIS server (JVP server site, 8083 http) is described here (a change is only necessary if required).

Note

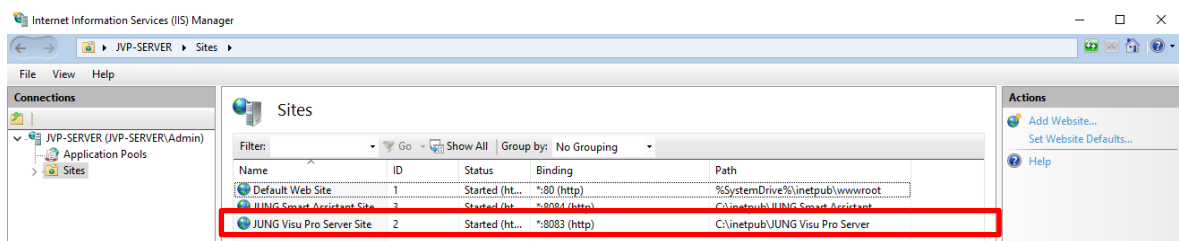
The implementation is the same for the JVP Smart Assistant (JVP Smart Assistant Site, 8084 http).

The port address can be changed in the IIS Manager:

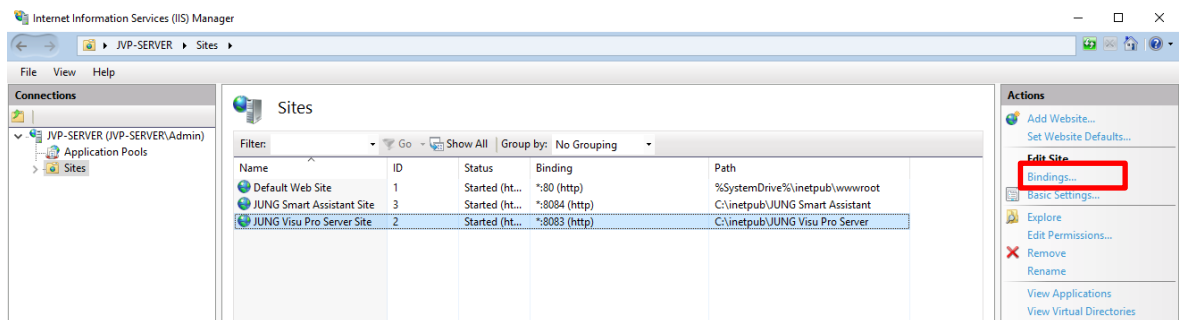
→ Windows management programs → Internet Information Services (IIS) – Manager → View Sites



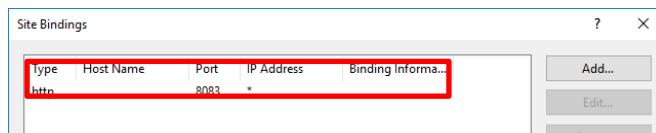
Press "View sites"



Select page -> JVP-Server Site here

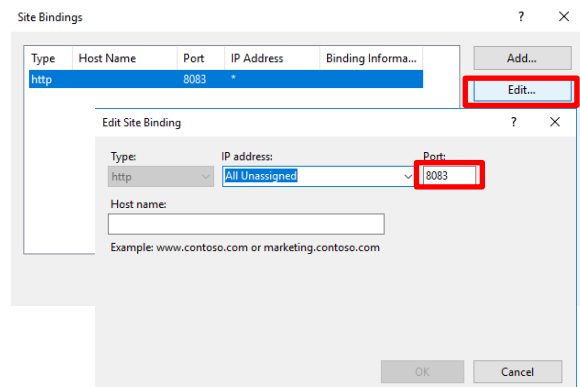


To set the port number, press "Site Bindings..."



Select line

Afterwards, press Edit



The port address can now be changed.

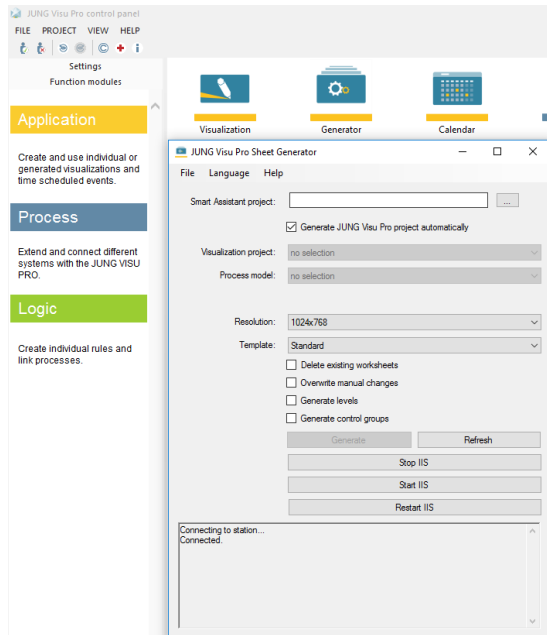
4 Brief Descriptions of the Software

4.1 JVP (Planner)

Note

The further procedure is described in the documentation.

4.1.1 Sheet Generator



The JUNG Visu Pro Sheet Generator is the interface of the JVP to the JUNG Visu Pro Smart Assistant.

Projects are created and exported with the Smart Assistant in the generator format (xxx.NAVGEN).

The sheet generator generates sheets for the selected visualization project from these files.

If a check box is ticked here, the sheet generator generates the required JVP projects.

Otherwise, the following projects must be available in the JVP:

- **Logical Project** (generate in the process model editor)
- **Visualization Project** (generate in the visualization editor)

Note

No special characters may be used in the project names (ü, ö, ä, ß etc.). The process connection must be created between the projects.

Note

After creating a project in the process model for installing the NAVGEN file, this project must be opened and closed once (in order to make it accessible for the sheet generator).

Note

A Smart Assistant project can be reworked in the JVP.

If the reworked JVP sheets are regenerated in the same format, these are overwritten in the JVP.

4.2 JVP – Smart Assistant

The JUNG Visu Pro Smart Assistant is a supplement for the JUNG Visu Pro visualisation.

A basic visualization is created with the Smart Assistant, in which the light, blind and heating functions can be navigated to room-based using the corresponding controls of the JUNG-GUI.

The function and favourite panels are not filled. These are available for individual control tasks. The basic visualization created with the Smart Assistant can therefore be customized and refined optionally using the normal editing tools of the JVP (visualization editor, process model editor) as needed.

Note

*The Smart Assistant is a server-client application.
Operation takes place exclusively via the browser window (e.g. Firefox, Safari).
Windows Internet Explorer does NOT work at the moment*

4.2.1 Access option 1 Local, on the Configuration PC

Enter **localhost:8084**.....in the input line of the browser and press the "Enter" key.

Note

The further procedure is described in the documentation.

4.2.2 Access option 2 Via the local network

If the configuration computer is in a local network, then the navigator can also be operated by another participant from the network (PC, notebook, tablet). At the same time, it is necessary to ensure that the Smart Assistant of the configuration PC is accessible (firewall, port enabling).

Enter **<IP address of the navigator-PC>:8084** in the input line of the browser and press "Enter" key.

Note

The further procedure is described in the documentation.

4.2.3 Export/Import of projects

Two data formats are available in order to export and save projects created in the Smart Assistant.

With the export of a project using the generator format **xxx.NAVGEN**, the interface to the JVP is used. Files of this type can be processed by the sheet generator (s. section 4.1.1)

With the export of a project in the format **xxx.NAVPRJ**, a file is generated, which in turn can be imported into the Smart Assistant. This means that a data backup e.g. on an external data carrier as well as a data exchange on another system with a Smart Assistant program is possible.

4.2.4 Note on Group Address Structure

When working with the Smart Assistant, there are two work options for processing the group addresses of the ETS:

- If the JUNG group address structure is *NOT* used, then the group addresses of the KNX project in the visualization editor of the JVP must be manually connected as before.
- Usage of the JUNG group address structure:
In the Smart Assistant there is a group address template customized to housing (single-family home/ villa/apartment) .
The export of the project project-related group address structure takes place from the navigator via `xxx.CSV` file. This can be imported to the ETS.

Benefits:

- A customized structure is created automatically for the ETS project;
- the connection of the group addresses with the controls takes place in the Smart Assistant;
- this saves additional time when creating the visualization;

Note:

Thus, it is possible to create the navigator project before ETS programming has taken place (and the group address is established).

Another benefit lies in the fact that the functionality of the graphic control surfaces can already be discussed with the client or architect at an early stage in the project and the visualization project is therefore not first created after completing all other work.

4.3 Visualization Server

The JVP offers the possibility of also controlling the visualizations from remote stations (clients, smart phones, tablets etc.) via corresponding browsers.

For this purpose, the JVP provides the sheets (via the VIS server) for access via the network.

The visualization is then controlled via HTML5-enabled browsers (Firefox, Safari and Chrome, in the current version).

It is advisable preferably to start the browser in full screen mode.

Enter **<IP address of the navigator-PC>:8083** in the input line of the browser.

At the same time, it is necessary to ensure that the VIS-server of the visualization PC is accessible (firewall, port enabling).

Note

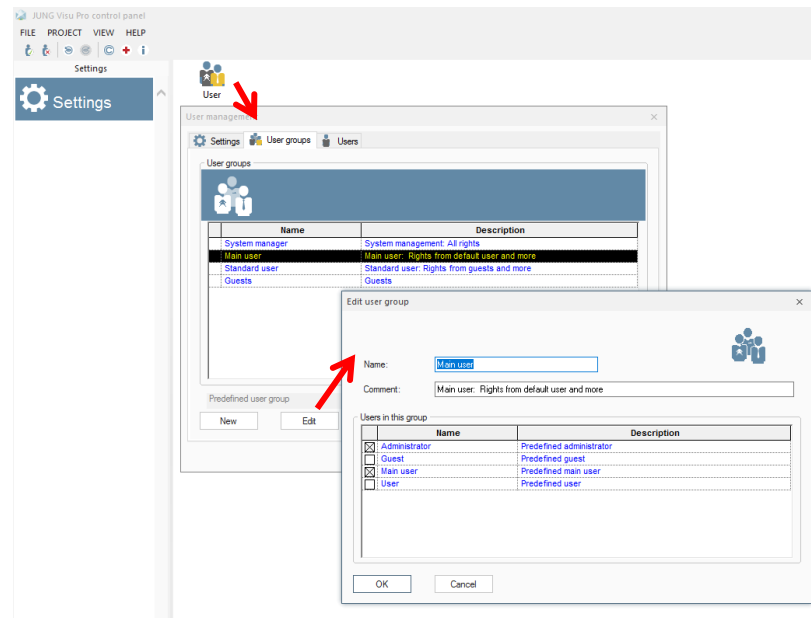
The further procedure is described in the documentation.

4.3.1 Note on User Management

The VIS server allows the setting of the user-related data of the project via the Administrator access.

The VIS server uses the user-settings of the JVP control panel for this purpose.

➤ JVP control panel



Note

After configuring and importing the project, the user settings must be customised to the customer PC/JUNG Visu Pro-SERVER-REG accordingly.

Note

The standard administrator access data is:

Username: admin

Password: 0000

Username: visuadmin

Password: 0000

4.3.2 Note on User Administration in the Vis Server

➤ Administrator Access to Visualization Server

An individual startsheet can be defined for each created user.

Pre-defined alarms can also branch to alarm sites via the html interface.

In order for a user to enable or disable the automatic change to set alarm sites, set the setting accordingly to Display Alarm Sites.

Edit User

Administrator

Startsheet:

Width:

Height:

Show startsheet after x seconds: 0 to deactivate.

Permanent Connection: ☐

Search for suitable sheet: ☐

Scaling: ☐ none
☒ aspect fit (centered)
☐ stretched

Display Alarm Sites: ☐

Alarm Sites: ☐ Lamp 1 LED → Alarm
☐ Lamp 2 LED → Alarm
☐ Lamp 3 R → GUI
☐ Lamp 4 G → Alarm
☐ Lamp 5 B → Ground plan
☐ Lamp 7 → Start page

OK Cancel